

opera cleveland
2010-11

"Dean Williamson conducted a **flesh-and-blood performance** that placed romantic yearning and buoyant spirits in exceptional balance."

- The Plain Dealer, *La bohème*

"A slam -

- Opera News, *La bohème*

"The production... **grabs ear & funny bone** with equal vibrancy"

- The Plain Dealer, *The Barber of Seville*

"Summed up in two words:
sheer joy."

- Opernwelt, *The Barber of Seville*

"The audience – a mix of everything from tuxedos to responded with **a long**

- Clevelandclassical.com, *The Barber of Seville*

"While the **richly colorful music** is capable of conjuring its own imagery, the effects on stage underline the magic of the score."

- WCLV, *Hansel & Gretel*

"Tomer Zvulun's staging vividly conveys the work's **amorous heat**, playfulness and tragic desperation."

- The Plain Dealer, *La bohème*

"This show was well
cast, well rehearsed and
well executed."

- ClevelandClassical.com, Falstaff

dunk hit."

"Of course opera
depends on voices,
& singers who can act.
This production
succeeded on
all counts."

-CoolCleveland.com, Le nozze di Figaro

people wearing
jeans –
ovation."

"A production that...
reaches
out to the
audience
to share the theatrical
magic."

- The Plain Dealer, Falstaff



THIS SEASON,
HEAR FOR
YOURSELF.

BY GAETANO DONIZETTI

Ruthless family politics deny Lucia her true love, breaking both her heart and her mind. But from the depths of madness and tragedy come some of opera's most riveting bel canto singing. Tomer Zvulun (*La bohème*, 2008) returns to Cleveland to direct a thrilling new production, with striking sets adapted specifically for Opera Cleveland.

AT THE STATE THEATRE
IN PLAYHOUSESQUARE



LUCIA DI LAMMERMOOR



THURSDAY, SEPT. 23, 2010 AT 7:30 PM
SATURDAY, SEPT. 25, 2010 AT 8 PM
SUNDAY, SEPT. 26, 2010 AT 2 PM



BY GEORGES BIZET

The arrival of a mysterious woman to a pearl fishers' island camp challenges the bond between two men. What will prevail—the fidelity of friendship or the unrelenting strength of love? Lush melodies, vibrant orchestration and evocative choreography frame Bizet's "other" masterpiece in the Grand Opera style.

AT THE STATE THEATRE
IN PLAYHOUSESQUARE

THE PEARL FISHERS

BY FRANCIS POULENC / RUGGERO LEONCAVALLO

A visceral meeting of two Italian and French extremes. *I Pagliacci* presents a "bleeding slice of life," a verismo tour-de-force fraught with lurid, emotional turmoil. In *La voix humaine*, the torment and despair of a jilted lover emerges in an enthralling monologue.

AT THE STATE THEATRE
IN PLAYHOUSESQUARE



La voix humaine & **I PAGLIACCI**



THURSDAY, NOV. 11, 2010 AT 7:30 PM
SATURDAY, NOV. 13, 2010 AT 8 PM
SUNDAY, NOV. 14, 2010 AT 2 PM



Pourquoi me réveiller
ô souffle du printemps,
pour quoi me réveiller
sur mon front je sens
tes caresses, et
pourtant bien proche
est le temps des orages
et des tristesses.

THURSDAY, APRIL 7, 2011 AT 7:30 PM
SATURDAY, APRIL 9, 2011 AT 8 PM
SUNDAY, APRIL 10, 2011 AT 2 PM



BY JULES MASSENET

Dutiful Charlotte is torn by her love for intense poet Werther (*ver-TARE*) and her commitment to another man. Massenet's sumptuous score dramatically sets Goethe's novel with Puccini-esque orchestration in a rare opportunity to see this French masterpiece.

AT THE STATE THEATRE
IN PLAYHOUSESQUARE

WERTHER

select **CAST**



NILI RIEMER
[lucia]



CARLOS ARCHULETA
[enrico]



SCOTT PIPER [edgardo]



CAITLYN LYNCH [leila]
seen here in our *Falstaff*



MICHAEL TODD SIMPSON
[zurga]



ROBERT MCPHERSON
[nadir]



ROBIN FOLLMAN
[nedda/elle]



TONIO DI PAOLO [canio]



DANA BETH MILLER [charlotte]
seen here in our *Hansel and Gretel*

PHOTO BY ERIC MULL



GARRETT SORENSON
[werther]



TERRI FRANKLIN
[sophie]



PHILIPPE PIERCE
[schmidt, beppe, normanno]

free **EVENTS**

MEET THE CAST

Who are the people behind the larger-than-life voices of opera singers? Find out about our performers at our Meet the Cast Q&A events, held a few weeks prior to each production.

PRE-OPERA TALKS

An hour before each performance, delve deeper into the opera with informative—and entertaining—insights from one of our knowledgeable speakers.

POST-SHOW DISCUSSIONS

Do you have questions after the performance? Join Artistic Director Dean Williamson at the front of the house at the conclusion of select shows.

Visit operacleveland.org for more information about these and other events.

EDUCATION & outreach

For over 25 years Opera Cleveland's Education Programs have brought the creativity and imagination that is the embodiment of opera to thousands of Northeast Ohio's students, parents, educators, and seniors. In the 2009-10 school year, Teaching Artists from Opera Cleveland will fan out to over 30 classrooms to teach long-term residencies. We will reach at least 7,000 members of our community through our Music! Words! Opera! program and Great Works Student & Senior Matinees.

Our programs develop an awareness of and appreciation for the art form, support teachers and students in their classrooms, provide access to the highest level of operatic artistry to all attendees, and nurture future audiences. Among our new initiatives this year are outreach to charter schools and home-schooling groups and expanded outreach to senior centers.

All of our programming is supported by the unstinting generosity of local and regional philanthropists including the White, Bruening, Stocker, Nord, and Nordson Foundations and dozens of individual donors. The Education Department is also the recipient of funding from the Ohio Arts Council.



find us **ONLINE**

facebook

If you're on Facebook—and who isn't these days?—become a fan of Opera Cleveland and keep in touch through our updates and special offers.

flickr

See photos from your favorite productions, as well as behind-the-scenes candid.
flickr.com/operacleveland



With quirky wit, Carl, the Opera Chicken, shares his "bird's eye" view of Opera Cleveland productions, education programs, the opera world and much more.
operachicken.blogspot.com

twitter

Carl also "tweets" his offbeat insights daily.
twitter.com/operachicken

www.operacleveland.org

GO! generation
GO! OPERA



Opera has long been a social activity, and now there's a group to blend your interest in opera with opportunities to socialize and connect with others. GO!, Generation Opera, is a new affiliate group of Opera Cleveland for those in the 25-50 age range.

Whether you are a long-time opera fan or are just exploring the art form, GO! offers ways to enrich your experience. Get involved with Opera Cleveland, learn more about opera in casual settings and socialize with other GO! members. To find out more, visit operacleveland.org or email go@operacleveland.org.

SUSTAIN opera

Because ticket sales only cover about one-third of the cost of presenting a season of grand opera, many of our subscribers wear two hats by also donating to the company.

Without donations, we would have to charge at least \$300 per seat for each and every performance – provided we sold every single seat to every performance. That's \$2,400 for two full subscriptions for next year!

The simple fact is, we need YOU to support us in two ways—by attending AND donating. Without you wearing the ticket buyer hat, it's just a rehearsal. Without you wearing the donor hat, it couldn't be grand opera. We invite you to try both hats on for size.

Gifts of any amount are greatly appreciated, however, gifts of \$200 or higher bring you attractive benefits, which you can read about at operacleveland.org. All contributions are tax-deductible, and Opera Cleveland is a 501(C)(3), not-for-profit organization.

For more information contact Steve Borstein, Director of Development at 216-575-0903, ext. 234 or at borstein@operacleveland.org.

OUR UNDERWRITERS



Ruth and Elmer
Babin Foundation



Cleveland
FOUNDATION



Harry K. & Emma R.
Fox Foundation

Ann & Gordon
Getty



The
George Gund
Foundation

The Kulas
Foundation



Martha Helen
Sennings Foundation

The John P. Murphy
Foundation



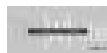
National City
is a part of



Northern Ohio
Opera League



THE PLAIN DEALER
MISS A DAY. MISS A LOT.



The William J.
and Dorothy K.
O'Neill Foundation



THE GRAND OPERA BALL

A Benefit for Opera Cleveland

Saturday April 10, 2010

6:30 pm - 12:00 am

at the InterContinental Hotel

Cocktails, Hors d'oeuvres,
Dinner, Dancing to the band
Special Request, Entertainment
by Opera Cleveland, Silent
Auction and Valet Parking.



Honorary Chairs

Drs. Michael & Joanne Schwartz

Chairs

Viia Beechler and Pauline Ramig



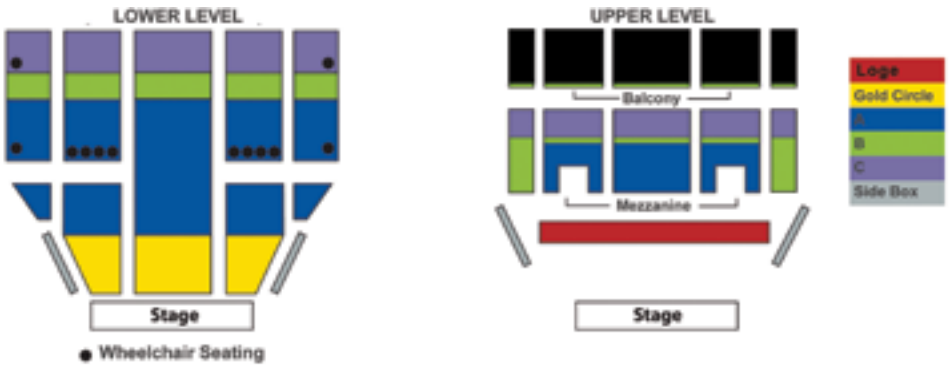
Do you have a service or item you would like to donate to the silent auction? Contact Jane Haylor at 216-389-4256.

If you are interested in sponsoring a table at the ball or underwriting the event, contact Pauline Ramig at 216-297-9074.

For more information, contact Steve Borstein at 216.575.0903, ext. 234.



state theatre SEATING CHART



subscriber BENEFITS

PRIVILEGES

- Enjoy free exchange privileges to any other performance during the same season.
- Never miss a show! Bring any unused tickets to another performance of that opera and you'll be admitted if seats are available.
- Exercise your right to renew your own series seats.
- Receive priority to change your seat location for next season.

ADDED VALUE

- Receive an annual subscription to our full-color newsletter *Bravo!*
- Rest assured with our ticket insurance. We'll immediately replace any lost tickets.

SAVINGS

- Subscribers save up to 20% off single ticket prices.
- Take advantage of prepaid parking in a convenient and safe location—the PlayhouseSquare Garage immediately adjacent to the State Theatre.

CONTACT US

Opera Cleveland, 1422 Euclid Ave, Suite 1052, Cleveland, OH 44115
Phone: 216.575.0903 • Fax: 216.575.1918 • www.operacleveland.org

for your **REFERENCE**

For our 2010-11 season, Opera Cleveland offers you several subscription options so you can choose the one that works for you.

- QUARTET** Enjoy all four titles of Opera Cleveland's season.
TRIO Choose any three titles.
DUET Choose any two titles.

Or you can go **SOLO** and purchase single tickets for a performance.

These individual tickets will go on sale **March 27** at operacleveland.org or by calling 216.241.6000.

SOLO TICKET PRICES

Loge	\$130
Gold Circle/Side Box	\$110
Section A	\$75
Section B	\$55
Section C	\$25

Lucia di Lammermoor

Thursday, May 20, 2010 at 7:30 pm

Saturday, May 22, 2010 at 8 pm

Sunday, May 23, 2010 at 2 pm

The Pearl Fishers

Thursday, Sept. 23, 2010 at 7:30 pm

Saturday, Sept. 25, 2010 at 8 pm

Sunday, Sept. 26, 2010 at 2 pm

I Pagliacci/La voix humaine

Thursday, Nov. 11, 2010 at 7:30 pm

Saturday, Nov. 13, 2010 at 8 pm

Sunday, Nov. 14, 2010 at 2 pm

Werther

Thursday, April 7, 2011 at 7:30 pm

Saturday, April 9, 2011 at 8 pm

Sunday, April 10, 2011 at 2 pm

TICKETS WILL BE MAILED IN MARCH 2010.

All dates, casting, event details and processing procedures are specified in good faith as accurate at the time of printing, but are subject to change without notice.

Checks and charges for your subscription package will be deposited immediately and do not guarantee seat availability. If we are unable to accommodate your request, we will contact you. Seating confirmations will not be mailed. ALL SALES ARE FINAL.

ORDER FORM

Please circle your package choice below. If you choose the Trio or Duet package, please circle the appropriate number of operas. In addition, please select your day and seating options in the boxes below.

	Loge <small>Sat & Sun only</small>	Gold Circle <small>lover level only</small>	Side Box	Section A	Section B	Section C
QUARTET	\$468	\$410	\$410	\$255	\$120	\$78
TRIO	\$365	\$312	\$312	\$180	\$93	\$66
	Circle 3	Lucia di Lammermoor	The Pearl Fishers	Pagliacci/La voix	Werther	
DUET	\$250	\$210	\$210	\$145	\$75	\$45
	Circle 2	Lucia di Lammermoor	The Pearl Fishers	Pagliacci/La voix	Werther	

***BEST VALUE**

THURSDAYS at 7:30 pm	<input type="checkbox"/>
SATURDAYS at 8 pm	<input type="checkbox"/>
SUNDAYS at 2 pm	<input type="checkbox"/>

LOWER LEVEL	<input type="checkbox"/>
UPPER LEVEL*	<input type="checkbox"/>

*There's no elevator access in the State Theatre

PRICE:	<input type="checkbox"/>	X	# OF SUBS:	<input type="checkbox"/>
PARKING: \$7.50	<input type="checkbox"/>	X	# OF OPERAS:	<input type="checkbox"/>
TAX-DEDUCTIBLE GIFT (optional)	<input type="checkbox"/>			
HANDLING FEE (required)	<input type="checkbox"/>			\$5.00
PAYMENT PLAN FEE (required for payment plans only; see reverse for more details.)	<input type="checkbox"/>			\$5.00
			TOTAL	<input type="checkbox"/>

Name _____

Address _____

City, State _____ Zip _____

Home ph _____ Cell ph _____

Email _____

PAYMENT OPTIONS

- Check enclosed made payable to Opera Cleveland
- Please charge my credit card below for the total amount due
- Please charge my credit card below in four installments*

*A one-time \$5 processing fee will apply for payment plans. Only one credit card may be submitted for payment plan billing. No debit cards, please. The first payment, along with the full balance of your tax-deductible gift, should you decide to donate, will be charged upon receipt of your subscription. All subsequent payments will be charged on the first of the month, at least 30 days after the initial payment.

Acct # _____

Exp Date _____ CW2/CID # _____

Your order will not be processed without your three-digit CW2/CID code (found on the back of your card).

Signature _____

Special Seating Requests: _____

MAIL TO: Opera Cleveland, 1422 Euclid Ave, Suite 1052, Cleveland, OH 44115

Or call **216.664.6065** for questions or to subscribe over the phone.